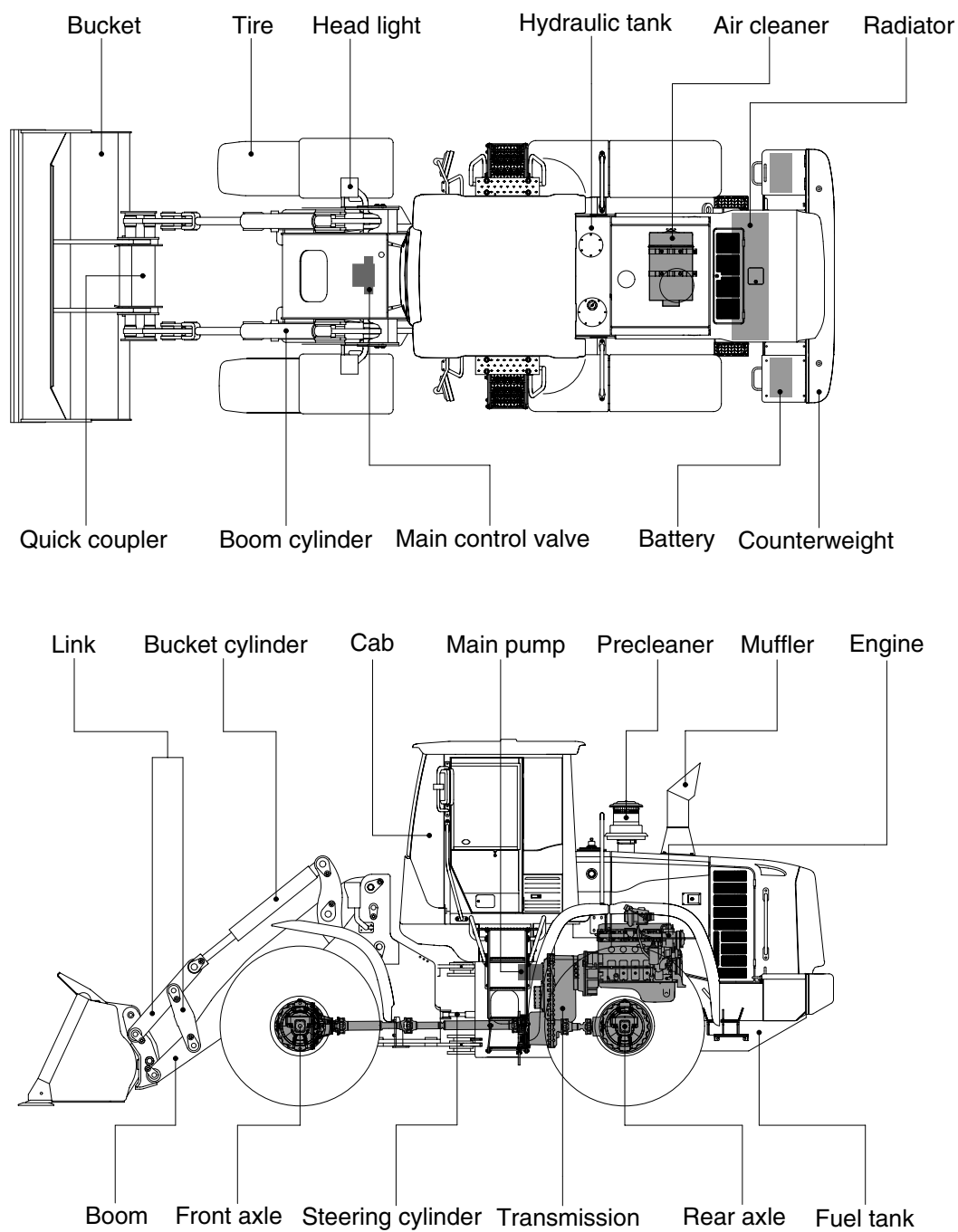


2. SPECIFICATIONS

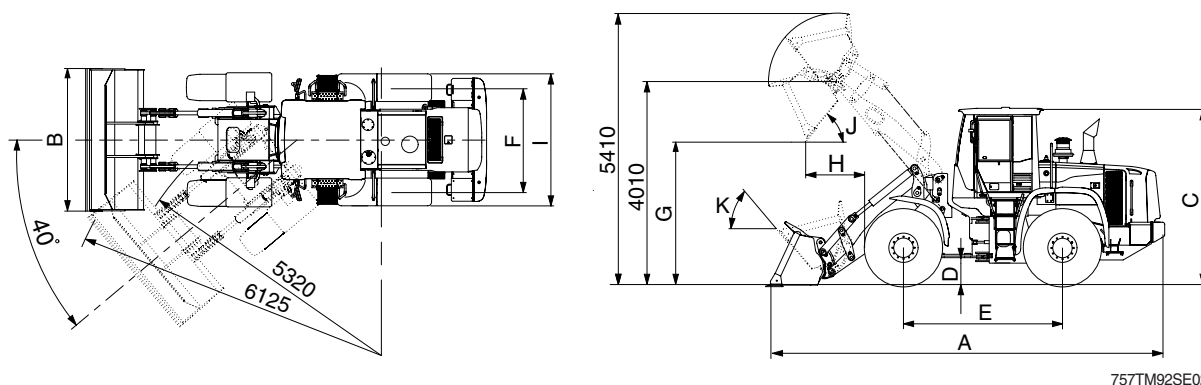
1. MAJOR COMPONENTS



757TM92SE01

2. SPECIFICATIONS

WITH BOLT-ON CUTTING EDGE TYPE BUCKET



| Description | | | Unit | Specification |
|---|------------------|-------------|-------------|----------------|
| Operating weight | | | kg (lb) | 15000 (33070) |
| Bucket capacity | Struck | | m³ (yd³) | 2.3 (3.0) |
| | Heaped | | | 2.7 (3.5) |
| Overall length | A | | mm (ft-in) | 7780 (25' 6") |
| Overall width | B | | | 2740 (9' 0") |
| Overall height | C | | | 3310 (10' 10") |
| Ground clearance | D | | | 410 (1' 4") |
| Wheelbase | E | | | 3050 (10' 0") |
| Tread | F | | | 2050 (6' 9") |
| Dump clearance at 45° | G | | | 2840 (9' 4") |
| Dump reach (full lift) | H | | | 1315 (4' 4") |
| Width over tires | I | | | 2580 (8' 6") |
| Dump angle | J | | | degree (°) |
| Roll back angle (carry position) | K | | 54 | |
| Cycle time | Lift (with load) | | sec | 5.9 |
| | Dump (with load) | | | 1.6 |
| | Lower (empty) | | | 3.8 |
| Maximum travel speed | | | km/hr (mph) | 37.7 (23.4) |
| Braking distance | | | m (ft-in) | 12 (39' 4") |
| Minimum turning radius (center of outside tire) | | | | 5.32 (17' 5") |
| Gradeability | | | degree (°) | 30 |
| Travel speed | Forward | First gear | km/hr (mph) | 6.9 (4.3) |
| | | Second gear | | 11.4 (7.1) |
| | | Third gear | | 23.0 (14.3) |
| | | Fourth gear | | 37.7 (23.5) |
| | Reverse | First gear | | 7.3 (4.5) |
| | | Second gear | | 12.1 (7.5) |
| | | Third gear | | 24.2 (15) |

3. WEIGHT

| Item | kg | lb |
|---|---------|---------|
| Front frame assembly | 1220 | 2690 |
| Rear frame assembly | 1702 | 3750 |
| Front fender (LH & RH) | 31 | 68 |
| Counterweight | 840 | 1850 |
| Cab assembly | 1050 | 2320 |
| Engine assembly | 485 | 1070 |
| Transmission assembly | 470 | 1040 |
| Drive shaft (front) | 18 | 40 |
| Drive shaft (center) | 17 | 37 |
| Drive shaft (rear) | 11 | 24 |
| Front axle (include differential) | 640 | 1410 |
| Rear axle (include differential) | 576 | 1270 |
| Tire (20.5-25, 16PR, L3) | 203 | 448 |
| Hydraulic tank assembly | 240 | 530 |
| Fuel tank assembly | 345 | 760 |
| Main pump assembly | 55 | 121 |
| Fan & brake pump assembly | 7 | 15 |
| Main control valve (2/3 spool) | 34 / 41 | 75 / 90 |
| Steering valve (EHPS) | 10 | 22 |
| Boom assembly | 910 | 2010 |
| Quick coupler assembly | 250 | 551 |
| Bucket link | 54 | 119 |
| 2.7m ³ bucket, with bolt on cutting edge | 1190 | 2620 |
| Boom cylinder assembly | 110 | 243 |
| Bucket cylinder assembly | 122 | 269 |
| Steering cylinder assembly | 28 | 62 |
| Seat | 40 | 88 |
| Battery | 44 | 97 |

4. SPECIFICATION FOR MAJOR COMPONENTS

1) ENGINE

| Item | Specification |
|-------------------------------------|--|
| Model | Cummins QSB6.7 / HYUNDAI HE6.7 |
| Type | 4-cycle turbocharged and charge air-cooled diesel engine |
| Control type | Electronic control |
| Cooling method | Water cooling |
| Number of cylinders and arrangement | 6 cylinders, in-line |
| Firing order | 1-5-3-6-2-4 |
| Combustion chamber type | Direct injection type |
| Cylinder bore × stroke | 107 × 124 mm (4.2" × 4.9") |
| Piston displacement | 6730 cc (410cu in) |
| Compression ratio | 17.2 : 1 |
| Rated gross horse power | 173 hp at 2100 rpm |
| Maximum gross torque at 1500 rpm | 83 kgf · m (600 lbf · ft) |
| Engine oil quantity | 18 l (4.8 U.S. gal) |
| Wet weight | 485 kg(1069 lb) |
| High idling speed | 2230 ± 50 rpm |
| Low idling speed | 800 ± 25 rpm |
| Rated fuel consumption | 252 g/kW · hr |
| Starting motor | Nippondenso 228000-7902 (24V-3.7kW) |
| Alternator | Delco Remy 24SI (24V-70Amp) |
| Battery | 2 × 12V × 130Ah |

2) MAIN PUMP

| Item | Specification |
|----------------------------|--|
| Type | Variable piston pump |
| Capacity | 50+38 cc/rev |
| Maximum operating pressure | 280 kgf/cm ² (3982 psi) |
| Rated oil quantity | 185 l /min (48.8 U.S.gpm / 40.6 U.K.gpm) |
| Rated speed | 2100 rpm |

3) FAN + BRAKE PUMP

| Item | Specification | |
|----------------------------|-------------------------------------|------------------------------------|
| | Fan | Brake |
| Type | Fixed displacement tandem gear pump | |
| Capacity | 19.4 cc/rev | 11.9 cc/rev |
| Maximum operating pressure | 120 kgf/cm ² (1710psi) | 150 kgf/cm ² (2130 psi) |
| Rated oil quantity | 41 l /min (10.8 U.S.gpm) | 25 l /min (6.6 U.S.gpm) |
| Rated speed | 2100 rpm | |

4) MAIN CONTROL VALVE

| Item | Specification |
|--------------------------------|------------------------------------|
| Type | 2 spool |
| Operating method | Hydraulic pilot assist |
| System pressure | 280 kgf/cm ² (3982 psi) |
| Overload relief valve pressure | 340 kgf/cm ² (4835 psi) |

5) REMOTE CONTROL VALVE

| Item | | Specification |
|-------------------------|---------|------------------------------------|
| Type | | Pressure reducing type |
| Operating pressure | Minimum | 6.5 kgf/cm ² (92.4 psi) |
| | Maximum | 22 kgf/cm ² (312.9 psi) |
| Single operation stroke | Lever | 80 mm (3.4 in) |

6) CYLINDER

| Item | | Specification |
|-------------------|-----------------------------|-----------------------|
| Boom cylinder | Bore dia × Rod dia × Stroke | ø 120 × ø 70 × 785 mm |
| Bucket cylinder | Bore dia × Rod dia × Stroke | ø 110 × ø 65 × 755 mm |
| Steering cylinder | Bore dia × Rod dia × Stroke | ø 65 × ø 45 × 436 mm |

7) DYNAMIC POWER TRANSMISSION DEVICES

| Item | | | Specification |
|--------------|-----------------------|--------------|--|
| Transmission | Model | | 4WG190 |
| | Type | Converter | Single-stage, single-phase |
| | | Transmission | Full-automatic power shift |
| | Converter stall ratio | | 2.121 : 1 |
| | Gear shift | | Forward fourth gear, reverse third gear |
| | Control | | Electrical single lever type, kick-down system |
| | Pump rated flow | | 105 ℓ /min (27.7 U.S.gpm) at 2000 rpm |
| Axle | Drive devices | | 4-wheel drive |
| | Front | | Front fixed location |
| | Rear | | Oscillation ± 13° of center pin-loaded |
| Wheels | Tires | | 20.5-25, 16PR (L3) |
| Brakes | Travel | | Four-wheel, wet-disc type, full hydraulic |
| | Parking | | Spring applied, hydraulic released brake on transmission |
| Steering | Type | | Full hydraulic, articulated |
| | Steering angle | | 40° to both right and left angle, respectively |